

VIOLINO PRIMO

CONCERTO

1

*Allegro assai*

*Piano*

VIOLINO PRIMO

*Adagio*

A single musical staff in G major, common time (C), featuring a slow, melodic line with several accidentals and a double bar line at the end.

*Allegro*

A musical staff in G major, 12/8 time, beginning with a fast, rhythmic melody.

A musical staff in G major, 12/8 time, continuing the fast, rhythmic melody with eighth and sixteenth notes.

A musical staff in G major, 12/8 time, continuing the fast, rhythmic melody.

A musical staff in G major, 12/8 time, continuing the fast, rhythmic melody.

A musical staff in G major, 12/8 time, continuing the fast, rhythmic melody.

A musical staff in G major, 12/8 time, continuing the fast, rhythmic melody.

A musical staff in G major, 12/8 time, continuing the fast, rhythmic melody.

A musical staff in G major, 12/8 time, continuing the fast, rhythmic melody.

A musical staff in G major, 12/8 time, concluding the fast, rhythmic melody with a double bar line and a wavy line.

Four empty musical staves at the bottom of the page.

VIOLINO DE CONCERTO

CONCERTO

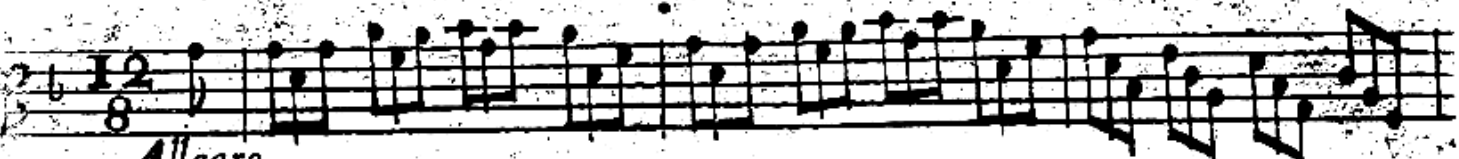
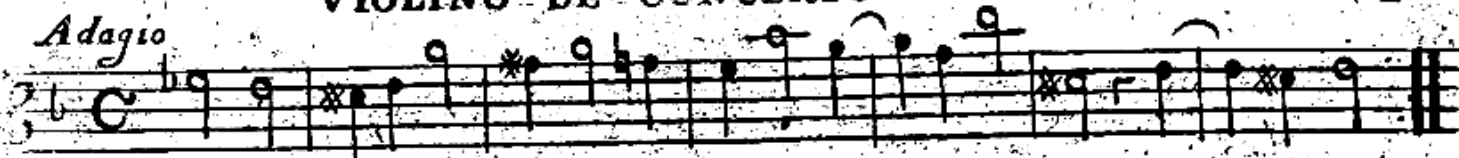
I

*Allegro assai*

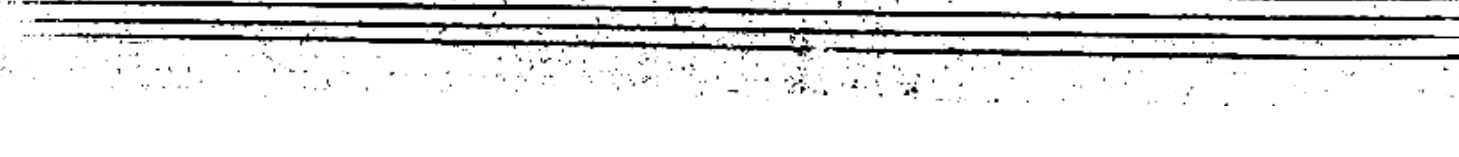
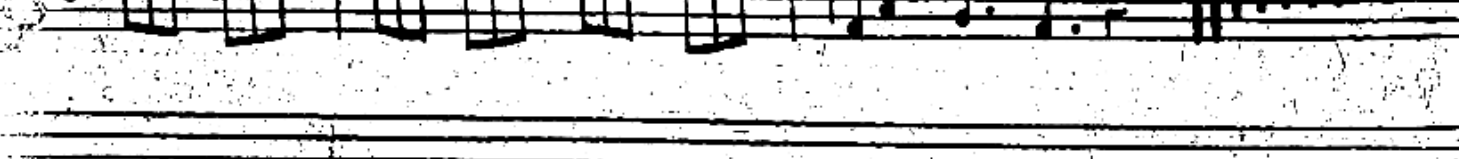
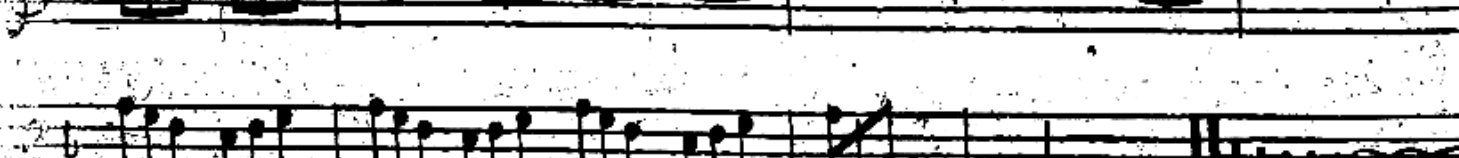
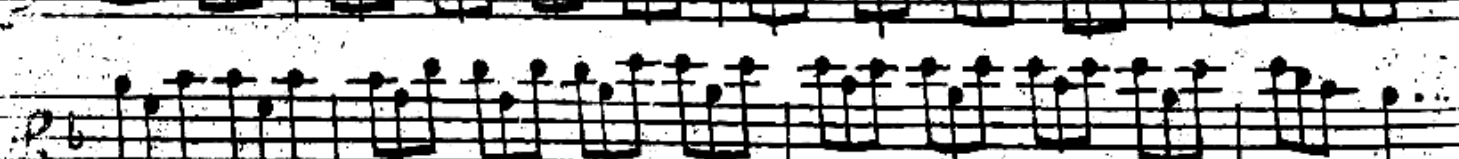
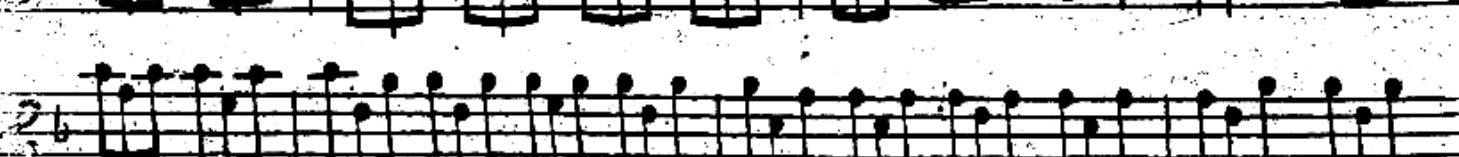
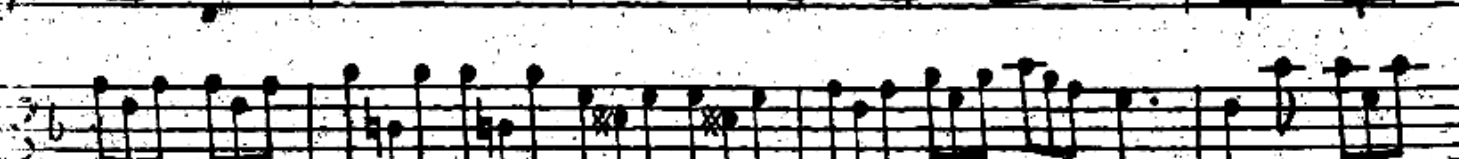
Musical score for Violino de Concerto, first movement, by Carlo Barato. The score consists of 12 staves of music in G major, 2/4 time, marked 'Allegro assai'. The first staff begins with a first ending bracket labeled 'I'. The music features a variety of rhythmic patterns, including eighth and sixteenth notes, and rests. A 'Piano' dynamic marking appears at the end of the 11th staff. The piece concludes with a double bar line on the 12th staff.

VIOLINO DE CONCERTO

*Adagio*



*Allegro*





VIOLINO SECONDO

I

CONCERTO

I

*Allegro assai*

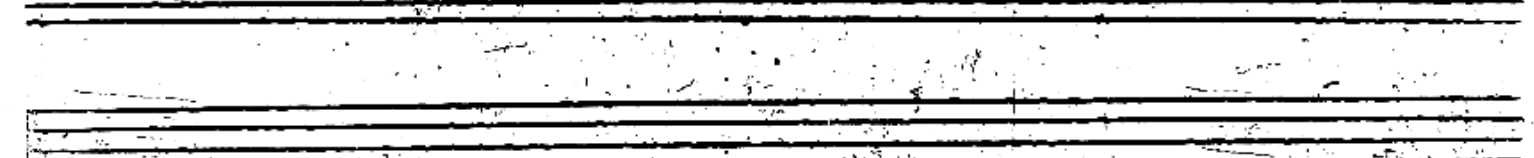
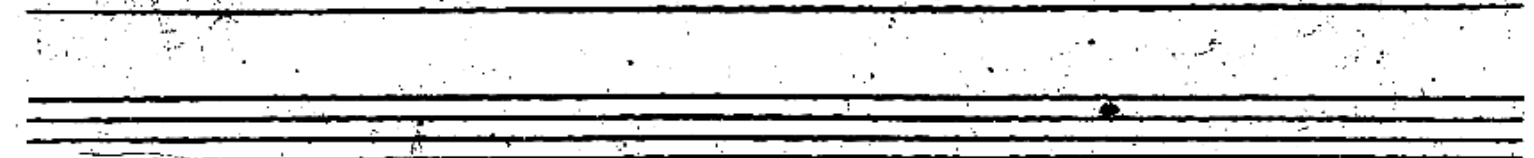
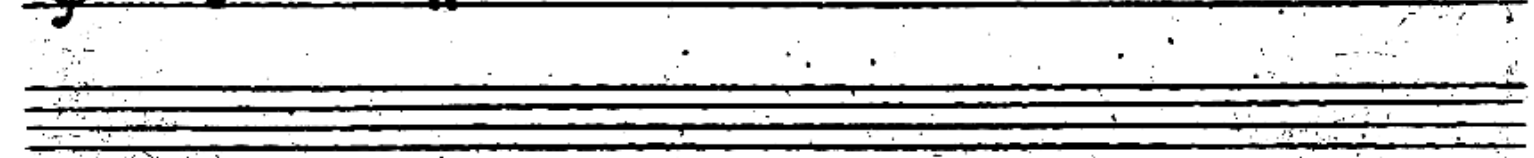
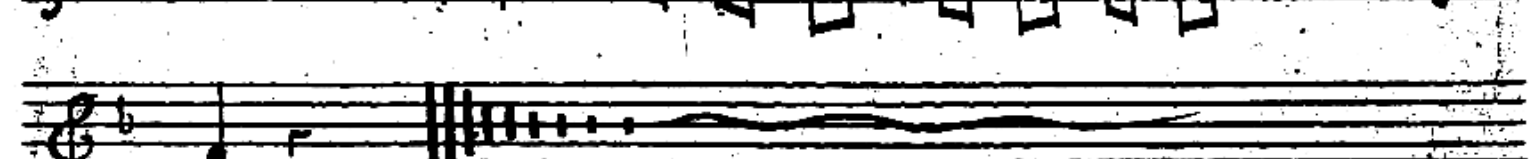
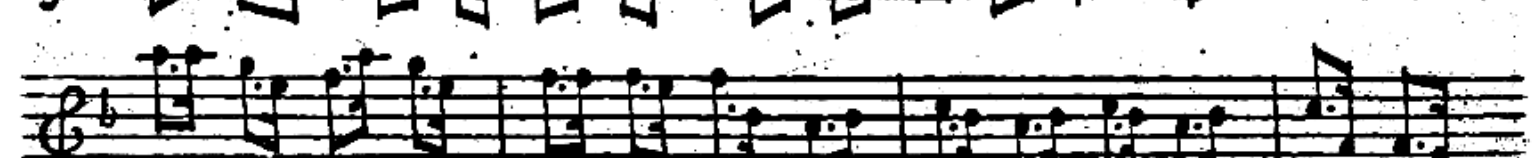
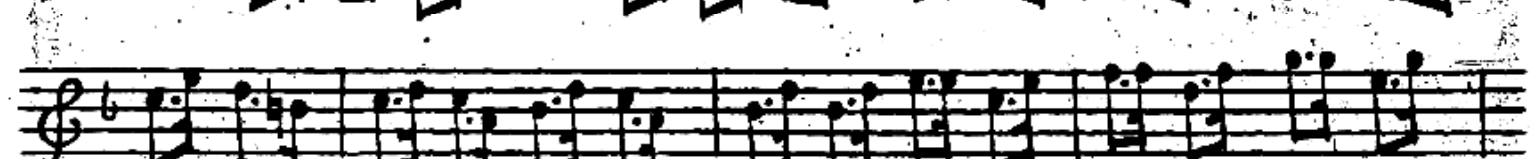
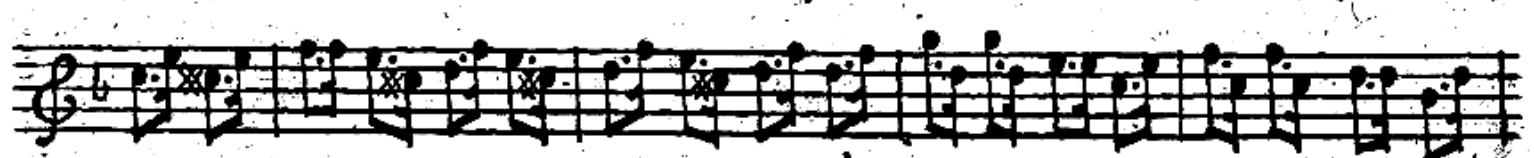
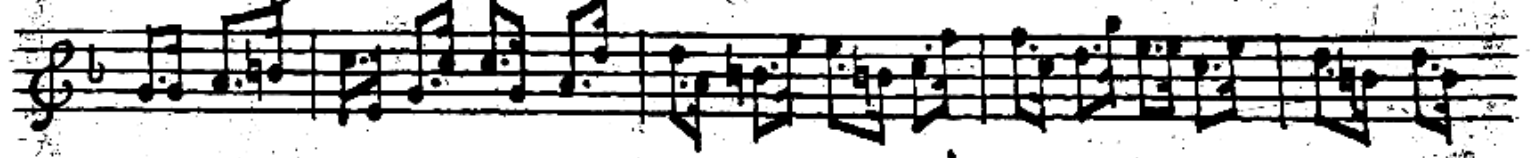
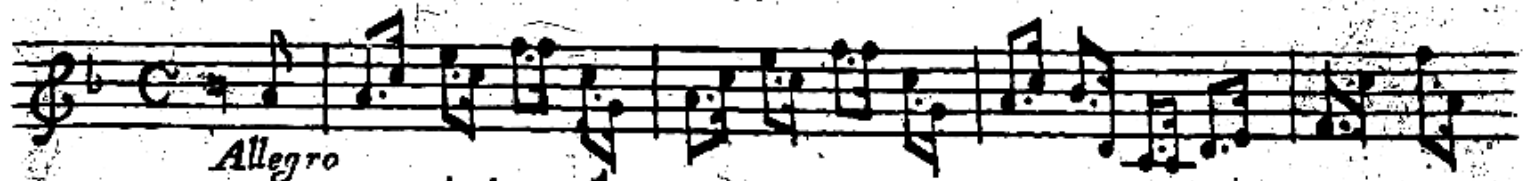
*Piano*

VIOLINO SECONDO

*Adagio*



*Allegro*



ALTO VIOLA

I

CONCERTO

I

*Allegro assai*

The first movement of the concerto is written for the Alto Viola in C major and 2/4 time. It begins with a treble clef and a common time signature (C). The tempo is marked 'Allegro assai'. The score consists of ten staves of music. The first staff contains the initial melodic line, followed by a series of rhythmic patterns and melodic fragments. A double bar line appears after the fifth staff, indicating the end of a phrase. The movement concludes with a final cadence on the tenth staff.

*Adagio*

*Allegro*

The second movement of the concerto is written for the Alto Viola in C major and 2/4 time. It begins with a treble clef and a common time signature (C). The tempo is marked 'Adagio'. The score consists of ten staves of music. The first staff contains a slow, melodic line. The tempo changes to 'Allegro' in the second staff, where the music becomes more rhythmic and complex. A double bar line appears after the fifth staff, indicating the end of a phrase. The movement concludes with a final cadence on the tenth staff.

VOLONCELLO

CONCERTO

I

*Allegro assai*

The first section of the score consists of ten staves of music. It begins with a treble clef, a common time signature (C), and a key signature of one flat (B-flat). The tempo is marked *Allegro assai*. The music features a variety of rhythmic patterns, including eighth and sixteenth notes, and rests. There are several dynamic markings, including *F* (forte) and *Flano* (piano).

*Adagio*

*Allegro*

The second section of the score consists of ten staves of music. It begins with a treble clef, a common time signature (C), and a key signature of one flat (B-flat). The tempo is marked *Adagio*. The music features a variety of rhythmic patterns, including eighth and sixteenth notes, and rests. There are several dynamic markings, including *F* (forte) and *Flano* (piano). The section concludes with a double bar line and a final cadence.



# BASSO CONTINUO

I

## CONCERTO

*Allegro affai*

The first section of the concerto is marked "Allegro affai". It consists of ten staves of music. The notation includes various rhythmic values such as eighth and sixteenth notes, as well as rests. Fingerings are indicated by numbers 1-5 above notes. There are several trills marked with a double asterisk (\*\*). The key signature is one flat (B-flat major or D minor). The time signature is common time (C). The section concludes with a double bar line.

*Adagio*

*Allegro*

The second section of the concerto is marked "Adagio" and "Allegro". It consists of ten staves of music. The notation includes various rhythmic values such as eighth and sixteenth notes, as well as rests. Fingerings are indicated by numbers 1-5 above notes. There are several trills marked with a double asterisk (\*\*). The key signature is one flat (B-flat major or D minor). The time signature is common time (C). The section concludes with a double bar line.