

A Kalmus Classic Edition

Aram

KHACHATURIAN

CONCERT RHAPSODY

FOR CELLO AND PIANO

K 04434



A Kalmus Classic Edition

Aram

KHACHATURIAN

CONCERT RHAPSODY

FOR CELLO AND PIANO

K 04434



KONZERT ~ RHAPSODIE

für Violoncello und Orchester

Khachaturian

1963

Andante sostenuto e pesante (♩ = 66)

Violoncello

Klavier

Andante sostenuto e pesante (♩ = 66)

ff

Hr.

Hbl.
Str.Hr. Trp.
Pk. Bck. Hfe.
Kb.

4

7

9

Besetzung des Orchesters:

2 Flöten, 2 Oboen, 2 Klarinetten in B, 2 Fagotte, 4 Hörner in F, 2 Trompeten in B, Pauken,
Schlagzeug: Xylophon, Kleine Trommel, Große Trommel, Becken, Tamtam; Harfe; Streicher

11 Hbl. Vl. Va.
Hr.
Fg. Vc. Kb.

13 poco accel.
poco più mosso
p molto cresc.

15 poco rit.
f cresc.

17 a tempo
ff

20 poco rit.
a tempo
Va.
mp

23 Andante (quasi cadenza)
f
rit. Andante
VI. I
Hr.
VI. pizz. Kl. Fg.



68 *poco a poco rit.*

73 a tempo

cantabile

76  ritard.

79 sost.  a tempo 

82 *rubato* *rit.*

85 a tempo

sub. p

88

Musical notation for exercise 88, featuring a treble clef, a key signature of one sharp (F#), and a melody of eighth and sixteenth notes.

91

Exercise 91 is a single staff in treble clef with a key signature of one flat (Bb). The melody consists of eighth and sixteenth notes with various accidentals.

94

Exercise 94 is a single-staff piece in G major (one flat). It features a melody of eighth and sixteenth notes with various accidentals, including naturals and sharps.

100 *f* *rubato*

103 poco ritard. a tempo

107 (♩ = 132)

p Hfe. Str. pizz. *f* Va. *p* Fl.

111

f *p* *f*

115 solo *f*

118

121

124

127 (♩ = 138)

f Va. *f* Hfe. Vl. I

130

Hfe. VI. II

ff

mf

133

136

139

142 $\#a$

f $\#a$

145

ff

148

f espr.
Va.

151

f dolce

154

mp

157

158

159

160

Vc. *p espr.*

161

162

163

p sub.

164

165

166

p sub.

167

168

cresc. poco

169

a poco

170

171

172

Str. pizz.
mf cresc. f
Pk. +Gr. Tr.

175

Tutti ff

181

f Hfe. Str. poco rit.

Meno mosso (♩ = 50)

187

p VI. I

190

mp Hfe. VI. II

193

poco a poco cresc.

+Va.

+Vc.

196

+Kb.

199

ff

ff

p

202

Hbl. Hfe. Str. pizz.

mp

206

210

sub. *p* marc. *cresc.*

VI. I *p* *cresc.* *mf* *cresc.*

214

poco rit. *f* *Adagio* (♩ = 60-66) *p cantabile*

poco rit. *Fl. Kl.* *Adagio* (♩ = 60-66) *f* *VI. Va.*

218

pp *pp*

222

mf *VI. I* *p* *Fg. Vc.*

225 *poco rit.* *cresc.* *ff* *a tempo*

poco rit. *a tempo* *Kl.* *Fl. Vl.* *Va.* *mf espr* *Vc.*

Fg. Hfe. Str. pizz.

228 *dim.* *p*

Va. *Vc. Kb.*

232 *cresc.* *poco rit.* *a tempo* *ff* *3*

Hr. I *poco rit.* *a tempo* *Str.* *Trp. I Hfe. Vc.*

cresc.

235 *mp* *p*

Vc. Kb.

239

string. poco a poco

Hfe. Vl. *m. s.*

m. s.

m. s.

m. s.

Hr. I *legato*

Va. Vc. Kb.

243

a tempo (♩ = 72)

a tempo (♩ = 72)

p

cresc.

f

p cresc.

247

p sub. cresc.

accel.

a tempo

p sub. cresc.

accel.

a tempo

p

Hfe. Str.

poco rit.

251

a tempo

mf

Hfe. Vl. II

sost.

poco accel.

poco accel.

F1. Kl.

Kl. Fg.

Fg. Str.

256

poco rit. a tempo (♩ = 60)

p

poco rit. a tempo (♩ = 60)

Vl. I

p

Str.

260

263

poco string.

poco a poco cresc.

poco string.

poco a poco cresc.

267

Hbl. Hfe. Str.

rit.

rit.

270 a tempo I (♩ = 54)

p dolce

a tempo I (♩ = 54)

Hfe.

pp

legg.

sim.

8...

272

8...

8...

273

8...

8...

275

8...

8...

276

accel.

8...

278

cresc.

8...

279

ritard.

ritard.

a tempo

a tempo

Str.

mf marc.

8...

281

rubato

rit.

Meno mosso (♩ = 92)

rit.

1 rit.

f

Hr.

Vc. Kb. pizz.

mf

Hfe. Str.

+Hbl.

286 Allegro animato (♩ = 120)

pp

Allegro animato (♩ = 120)

mp

Vc. Kb. pizz.

289

f

VI.

mf

mf

292

f

Fg.

Hr.

296

Ob. Kl.

f

Fg. Str.

301

Str. *f* *mp* *f*

Vc. Kb. pizz.

304

VI. I *f* VI. II Va.

307

Kl. Hr. *f*

311

Hfe. Vc.

315

cresc. *ff* *f* Ob. I

319

f VI. I
Va. VI. II *f*

323

Fl. I *f* +Ob. I

326

f VI. I VI. II *f* VI. I

Hfe. Vc. pizz.

330

Str. *p*

334

f

340

VI. II *f* VI. I

342

VI. II (VI. I) (Str.) *ff* Hr.

344

(Hbl.) Hfe. *f* *p*

347

Str. pizz.

p *f*

355

Kl.

mf *cresc.*

361

fp *cresc.* *f* *p* *cresc.*

368

Hbl. Hr.
Hfe. Str.

ff

371 pizz. *f*

Kl. I *mf*

374 arco *f*

VI. I *f*

Vc. Kb.

Fg. Va. Vc.

377

F1. Kl. Hfe. *f*

Va. Vc. Kb.

381

Hfe. VI. *f*

385

Fl. Kl.
Hfe.

f

Trp.

Vl.

Vc. Kb.

Va. Vc.

389

Fl. Fg. Hfe.

f

Vc. Kb.

393

Fl. Fg. Hfe.

f

Vc. Kb.

397

Fl. Fg. Hfe.

f

Vc. Kb.

402

f Hr. Trp. Hfe.

ff sf

407

cresc. *ff*

Hfe. Str.

p sf cresc. *ff sf*

411

cresc. *p cresc.*

415

Poco meno mosso, appassionato ($\text{♩} = 92$)

Hr. Schl. Str. Trp.

ff marc.

420

ritard. *ff* *poco rit.*

Str.

Hr. Fl. Ob. Kl.

Tempo I (♩ = 60-66)

426

solo

ff

sub. p poco a poco cresc.

Tempo I (♩ = 60-66)

Str.

p

cresc.

430

ff

poco rit.

Tempo I

f espr.

434

ff

ff + Hfe.

Hr.

sf

poco rit.

Tempo I

mf

Str.

437

Ob. I

3

Ob. I

Ob. I

Str.

440

molto espr.

espr.

443

446

449

poco tenuto *a tempo* *poco rit.*

poco tenuto *a tempo* *poco rit.*

sf

452 *a tempo*

p

a tempo

p

455

457

rit.

rit.

459 *Tempo I*

f

Tempo I

f

mf

f

VI. Va.

Fg. Vc.

Pk. Hie.

Kb.

461

(Fl. I)

463

poco a poco cresc.

465

poco string.

poco string.

Ob. Kl.

Fg.

Va. Vc. Kb.

468

a tempo ($\text{♩} = 72$)

a tempo ($\text{♩} = 72$)

Str.

p *mf*

472 string.

string.

p *mf* *p* *cresc.*

Ob. Kl. Fg.

+Hfe.

476 poco rit. a tempo

poco rit. a tempo

Fl.

Fl. Hfe. Vc.

poco string. Ob. Kl. Hfe.

sost. Hfe. Vl. Va.

482 rit. pesante

Maestoso, molto espressivo (♩ = 60-63)

rit. pesante

Hbl. Str.

Maestoso, molto espressivo (♩ = 60-63)

Ob. Kl. Str.

f *ff*

Hr. Hfe.

Schl. Kb.

486

Tutti

poco string.

molto ritard.

a tempo

p sub. *molto cresc.*

ff Str. pizz.

489

p sub. *molto cresc.*

ff Str. pizz.

493 *molto rit. rubato* Tempo I, ma pochissimo sostenuto ($\text{♩} = 54$)

mf *p*

VI. *molto rit.* Tempo I, ma pochissimo sostenuto ($\text{♩} = 54$) VI. I

Hfe. Str. *pp* Kl. Str. *pp* Fg. *sf*

Kl. Fg.

Hfe. Tamt.

497

500 *poco accel.*

503 *molto rit.* *a tempo*

molto rit. *a tempo* Str. *pp mf*

507 rit. Meno mosso (♩ = 92) poco rit.

Va. rit. Meno mosso (♩ = 92) poco rit.

Hbl. Hfe. Str.

Vc. Kb.

*

511 Allegro vivace (♩ = 144-152) *mf*

Kl. Hfe. Vl. *mf*

Allegro vivace (♩ = 144-152)

514 *poco a poco cresc.*

517

520

mf

Tutti

ff

f

Fg. I

524

K1. I

K1.

527

Hfe. Str.

f

K1. Vl.

Hfe. Va. Vc. Kb.

531

f

Fl. I Ob. I

f

Fg. Va. Vc. Kb.

535

Kl.

538

ff

Fl. I
Ob. I

Vl. I

Vl. II

p

541

Va.

Tutti

ff

544

(b)

(b)

547

mf

Kl. Hfe.

mf

Str.

550

mf

554

mf

558

mf

561

Measures 561-563. The system includes a vocal line and a piano accompaniment. The piano part features a string section (Str.) playing a rhythmic pattern of eighth notes, marked with a piano (*p*) dynamic. The vocal line consists of eighth notes in a descending scale.

564

Measures 564-566. The system includes a vocal line and a piano accompaniment. The piano part features a string section (Str.) playing a rhythmic pattern of eighth notes, marked with a piano (*p*) dynamic. The vocal line consists of eighth notes in a descending scale. A crescendo (*cresc.*) marking is present in measure 566.

567

Measures 567-569. The system includes a vocal line and a piano accompaniment. The piano part features a string section (Str.) playing a rhythmic pattern of eighth notes, marked with a piano (*p*) dynamic. The vocal line consists of eighth notes in a descending scale. A *Tutti* marking is present in measure 568, and a *ff marc.* marking is present in measure 569.

570

Measures 570-572. The system includes a vocal line and a piano accompaniment. The piano part features a string section (Str.) playing a rhythmic pattern of eighth notes, marked with a piano (*p*) dynamic. The vocal line consists of eighth notes in a descending scale. A *f* marking is present in measure 571.

573

Fg. Vc. *f* +Va.

576

+Kl. VI. II (+Ob. VI. I)

578

(+Fl.) *f*

581

Str. *f*

584

ff

Kl. I

f Hfe. Str.

587

590

Str.

593

597

Fl. Kl. VI. I

f

Str.

600

p

Str.

Kl. Fg.

603

ff

f

606

mf

Fl. Kl. I

609

ff *pizz.* *cresc.*

Hfe. Vl. pizz.

611

ff *p sub.* *Str.*

Hfe. Va. Vc. pizz.

613

ff *Tutti* *poco cresc.*

616

riten. *riten.* *8*

A Kalmus Classic Edition

Aram

KHACHATURIAN

CONCERT RHAPSODY

CELLO

K 04434



KONZERT - RHAPSODIE

für Violoncello und Orchester

VIOLONCELLO

Khachaturian

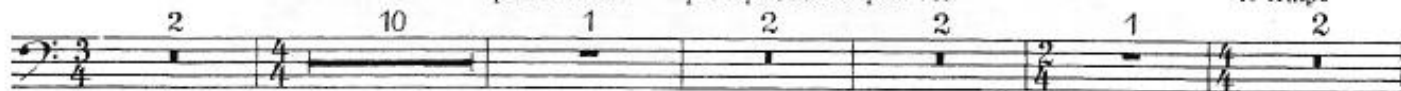
1963

Andante sostenuto e pesante (♩ = 66)

poco accel.

poco più mosso poco ril.

a tempo



Allegro vivace (♩=138)

[51] *p*

[54] *poco a poco cresc.*

[57] *p* *poco a poco cresc.*

[60] *ff*

[63]

[67] *poco a poco rit.*

[72] *a tempo*

[75] *cantabile*

[78] *ritard.* *sost.*

[81] *a tempo* *rubato*

[84] *rit.* *a tempo* *sub. p*

[87]

90

93

96

99

102

106

111

116

119

122

126

rubato

poco ritard.

a tempo

$\text{♩} = 132$

solo

$\text{♩} = 138$



166

p sub.

Example 16-9 shows a melodic line in G major, starting on G4 and moving stepwise up to D5, then down to G4. The melody is composed of eighth and sixteenth notes, with a final cadence on G4.

[175] *poco rit.* *Meno mosso* (♩ = 50)

0 9 2 1 8 VI. II

208

sub. p marc. cresc.

212 *poco rit.* Adagio (♩ = 60-66)

VIOLONCELLO

216 *p cantabile* *pp*

220 *mf*

224 *cresc.* *poco rit.* *a tempo* *ff*

228

233 *cresc.* *poco rit.* *a tempo* *ff*

236 *mp*

241 *string. poco a poco* *a tempo* ($\text{♩} = 72$)

246 *p sub. cresc.* *accel.* *a tempo*

250 *poco rit.* *a tempo* *poco accel.* *v*

256 *poco rit.* *a tempo* ($\text{♩} = 60$) *p*



[307] *f* *D* *V* *4* *2* *1* *V*

[311] *C* *V* *3* *0*

[316] *cresc.* *ff* *D*

[321] *0* *3* *1* *4* *1* *1*

[325] *V* *0* *4* *2* *f*

[330] *4* *1* *A*

[333] *V* *2* *3* *4*

[338] *3* *5* *VL. I* *f* *3* *4* *3*

[348] *1* *2* *3* *2* *3* *3*

[354] *D* *G* *D* *A* *3* *f* *1*

[illegible]

Tempo I

433 *f espr.*

436 *molto espr.*

442

445

448 *poco tenuto* *a tempo*

451 *poco rit.* *a tempo* *p*

454

457 *rit.* *Tempo I* *f*

460

461 II

465

464 II

468 poco string. a tempo (♩=72)

471 string.

475 V poco rit. a tempo poco string V

481 rit. pesante Maestoso, molto espr. (♩=60-63) a tempo molto ritard. f pizz.

493 molto rit. rubato Tempo I, ma pochissimo sostenuto (♩=54) mf p

497 V

500 poco accel.

502 II molto rit.

505 a tempo rit. Meno mosso (♩=92) poco rit.

Allegro vivace (♩ = 144-152)

511 *mf*

514 *poco a poco cresc.*

517

520 *mf*

524

527

533 *f*

536

539 *ff*

542 *mf*

VL.

552

556

560

563

566

572

solo

575

VII.

581II

585

588II

